



# AALIM MUHAMMED SALEGH COLLEGE OF ENGINEERING



Approved by All India Council for Technical Education, New Delhi  
Affiliated to Anna University, Chennai

NAAC Accredited Institution & NBA Accredited Courses (Mech. Engg., ECE, CSE, IT)  
"Nizara Educational Campus" Muthapudupet, Avadi-IAF, Chennai - 55.

## 7.1.2 The Institution has facilities and initiatives for

1. Alternate sources of energy and energy conservation measures.
2. Management of the various types of degradable and non-degradable waste.
3. Water conservation.
4. Green campus initiatives.
5. Disabled-friendly, barrier free environment.

### 1. Alternate sources of energy and energy conservation measures

Roof Top Solar Power Plant of capacity 20KW is installed and it will meet most of the power demand by the institute.

weblink: <https://www.aalimec.ac.in/other-facilities/>



Figure: 20 KW Rooftop Solar Grid



*Moz*  
**PRINCIPAL**  
AALIM MUHAMMED SALEGH  
COLLEGE OF ENGINEERING





# AALIM MUHAMMED SALEGH COLLEGE OF ENGINEERING



Approved by All India Council for Technical Education, New Delhi  
Affiliated to Anna University, Chennai  
NAAC Accredited Institution & NBA Accredited Courses (Mech. Engg., ECE, CSE, IT)  
"Nizara Educational Campus" Muthapudupet, Avadi-IAF, Chennai - 55.

## Use of LED Lamps

In all sections of the campus, the lecture rooms, office rooms, staff rooms, etc., are airy; and have natural light and ventilation due to which there is minimal energy consumption. The college has 300 LED tube lights; and has replaced old electric appliances

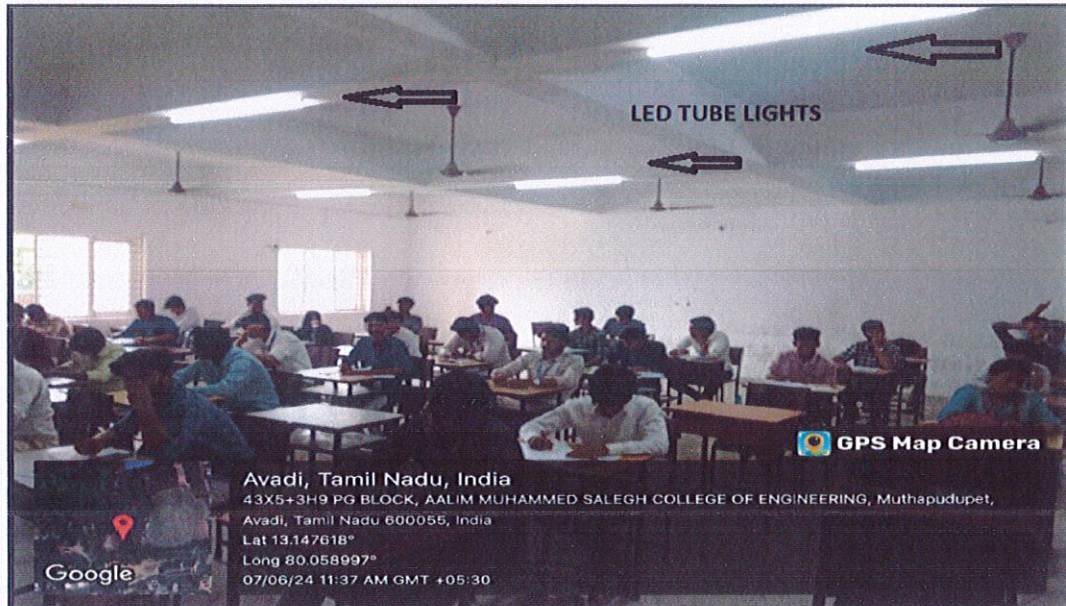


Figure: Usage of LEDs in Classrooms and corridors

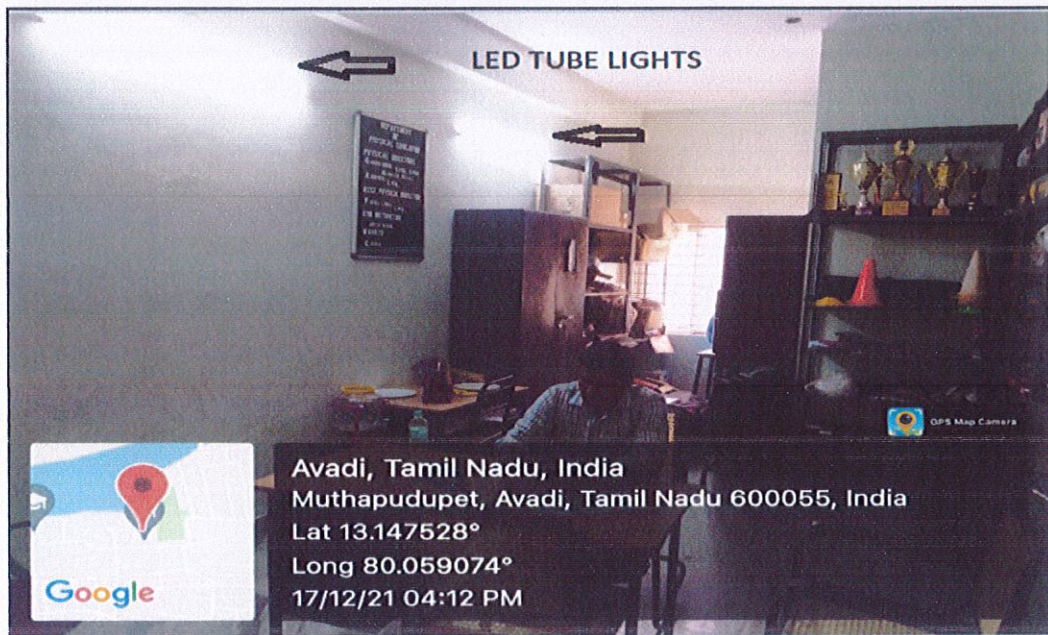


Figure: Usage of LEDs in Staff Room



  
PRINCIPAL  
AALIM MUHAMMED SALEGH  
COLLEGE OF ENGINEERING





# AALIM MUHAMMED SALEGH COLLEGE OF ENGINEERING



Approved by All India Council for Technical Education, New Delhi  
Affiliated to Anna University, Chennai

NAAC Accredited Institution & NBA Accredited Courses (Mech. Engg., ECE, CSE, IT)  
"Nizara Educational Campus" Muthapudupet, Avadi-IAF, Chennai - 55.

## 2. Management of the various types of Degradable and non-Degradable waste.

Pollution from waste is aesthetically unpleasant and results in a large amount of litter. Solid Wastes, which may cause severe health problems, can be categorized into three types, Biodegradable, Non-Biodegradable and Hazard Waste. Biodegradable waste includes food waste, Hostel waste and waste from toilets etc. Non-Biodegradable waste includes plastic, tin, glass, bottle etc. and Hazard waste that is likely to be a threat to the health of the environment like, cleaning chemical and different laboratory related Chemical Products. Being an educational institution, the college does not generate any hazardous waste. The vegetable waste from the Hostel is disposed of regularly to keep the campus clean. However, waste is generated by all sorts of routine activities carried out in the College that includes paper, plastics, glass, metals, foods, etc. The college believes its utmost responsibility to remove all waste not only for the safety of the students but also not to harm the environment. Adequate number of trash cans and dust bins are placed all over the campus. The collected waste is disposed-off with the help of Municipal Corporation on a daily basis. Waste generated in the college is segregated using different coloured (**Blue, Green, Red**) dustbins placed in the premises.

e-waste generated from various departments which cannot be reused or recycled is being disposed off centrally through certified eco-friendly vendors. Instead of buying a new machine, a buyback option is taken for technology upgrade. Any damages or reductions in capacity are set right by repairs. In addition, the college has emphasis on minimum paper usage to save carbon emission in printers. e-waste is given to registered vendors, with an undertaking that the same will be processed or recycled in an environmentally sound manner as per the guidelines of Government of India. The e-waste includes a wide range of electronic and electrical items such as computers, printers, keyboards etc. Electronic machines and goods are put to optimum use. The institute takes efforts to minimize e-waste by repairing the computer peripheral and electronic components.



  
PRINCIPAL  
AALIM MUHAMMED SALEGH  
COLLEGE OF ENGINEERING





# AALIM MUHAMMED SALEGH COLLEGE OF ENGINEERING



Approved by All India Council for Technical Education, New Delhi  
Affiliated to Anna University, Chennai

NAAC Accredited Institution & NBA Accredited Courses (Mech. Engg., ECE, CSE, IT)  
"Nizara Educational Campus" Muthapudupet, Avadi-IAF, Chennai - 55.

## Collection of Dry Waste

Avadi Municipal corporation collecting Dry waste regularly from the college campus.

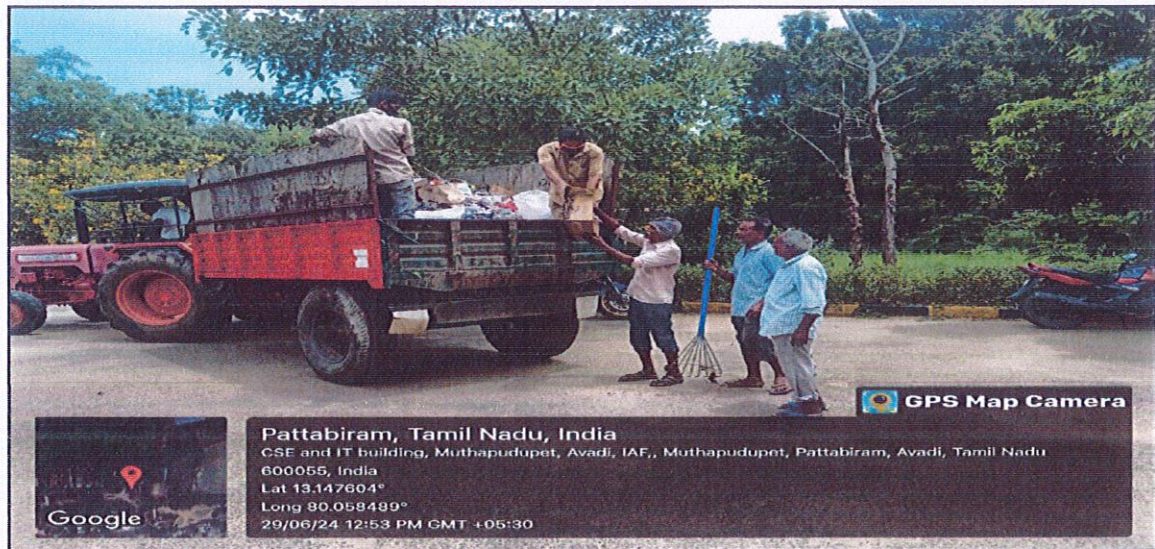


Figure: Collection of Dry waste

## DUSTBINS

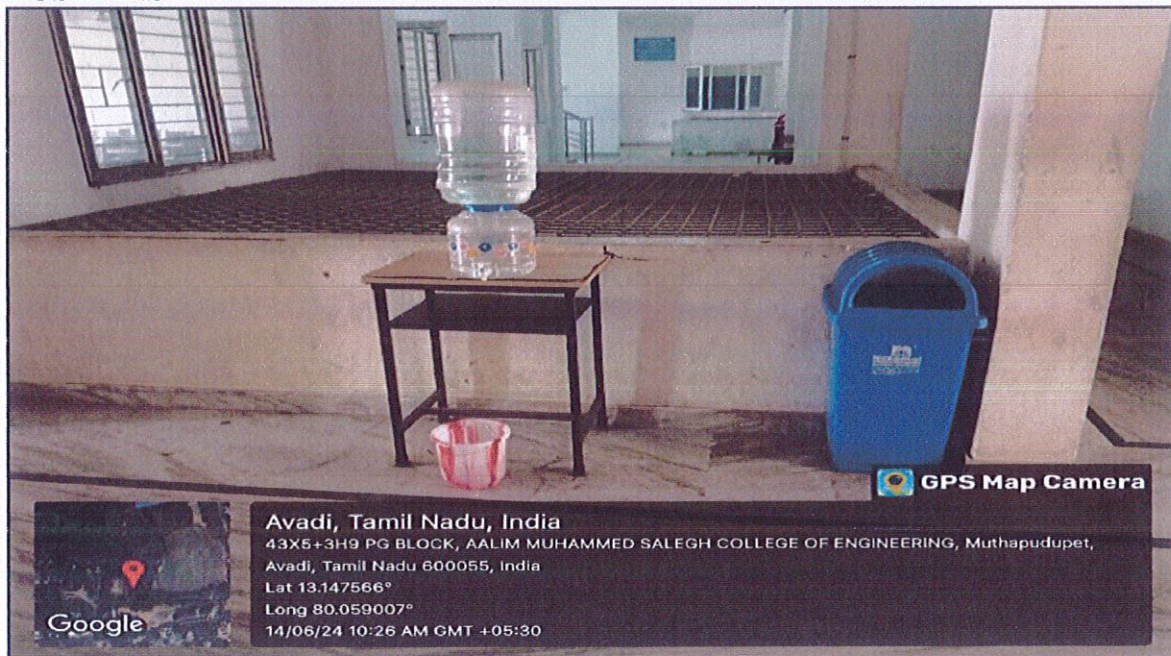


Figure: Dustbins placed in appropriate places



*[Signature]*  
**PRINCIPAL**  
AALIM MUHAMMED SALEGH  
COLLEGE OF ENGINEERING





# AALIM MUHAMMED SALEGH COLLEGE OF ENGINEERING



Approved by All India Council for Technical Education, New Delhi  
Affiliated to Anna University, Chennai

NAAC Accredited Institution & NBA Accredited Courses (Mech. Engg., ECE, CSE, IT)  
"Nizara Educational Campus" Muthapudupet, Avadi-IAF, Chennai - 55.

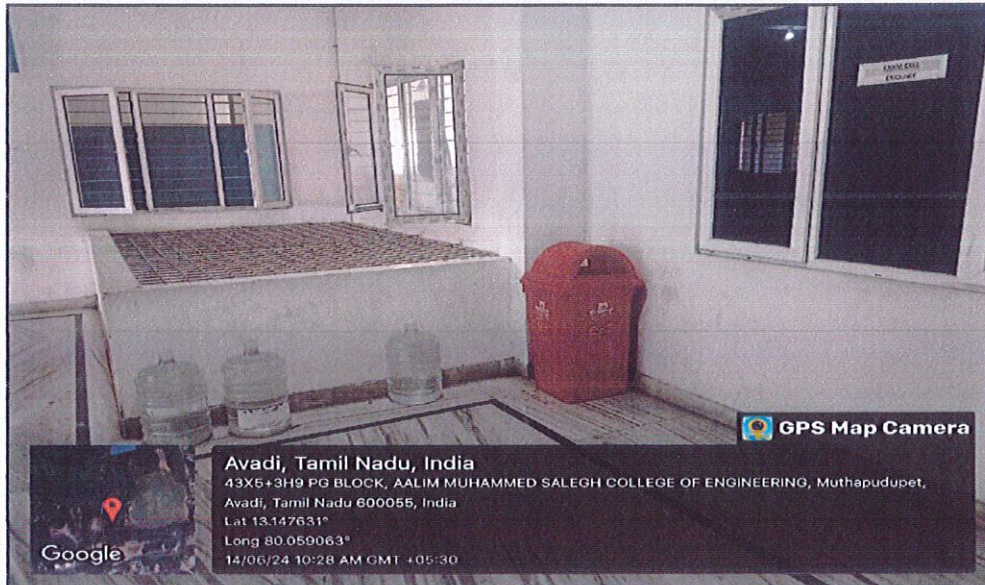


Figure: Dustbins placed in appropriate places

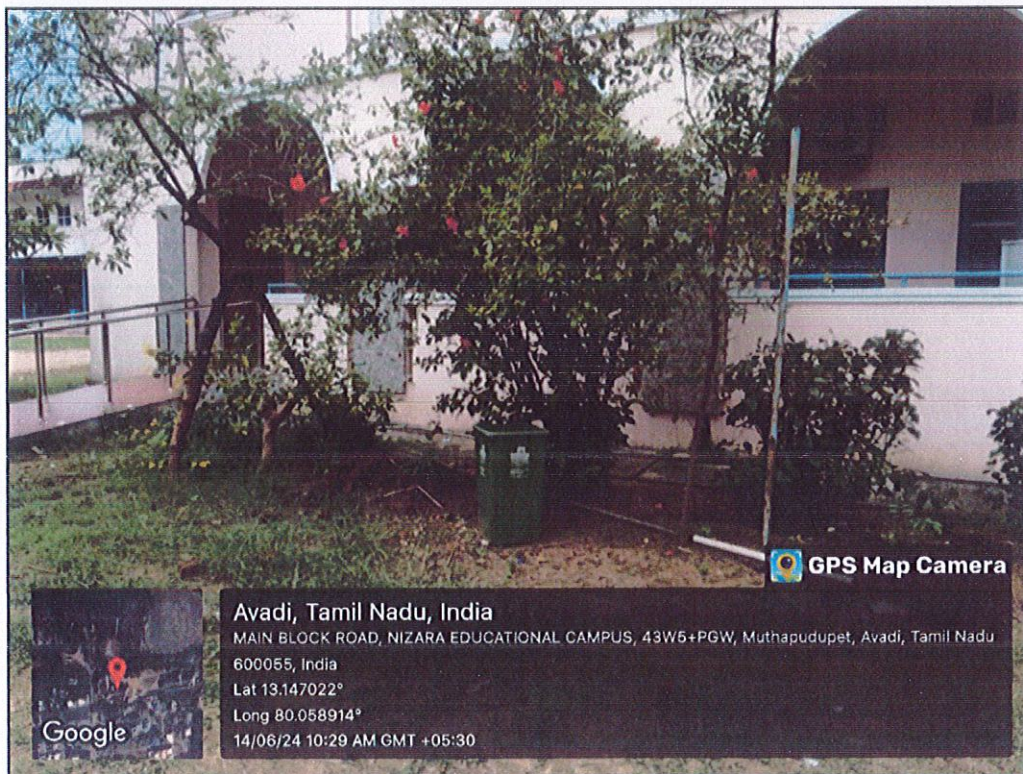


Figure: Dustbins placed in appropriate places



**PRINCIPAL**  
AALIM MUHAMMED SALEGH  
COLLEGE OF ENGINEERING





# AALIM MUHAMMED SALEGH COLLEGE OF ENGINEERING



Approved by All India Council for Technical Education, New Delhi  
Affiliated to Anna University, Chennai

NAAC Accredited Institution & NBA Accredited Courses (Mech. Engg., ECE, CSE, IT)  
"Nizara Educational Campus" Muthapudupet, Avadi-IAF, Chennai - 55.

## e-Waste Management

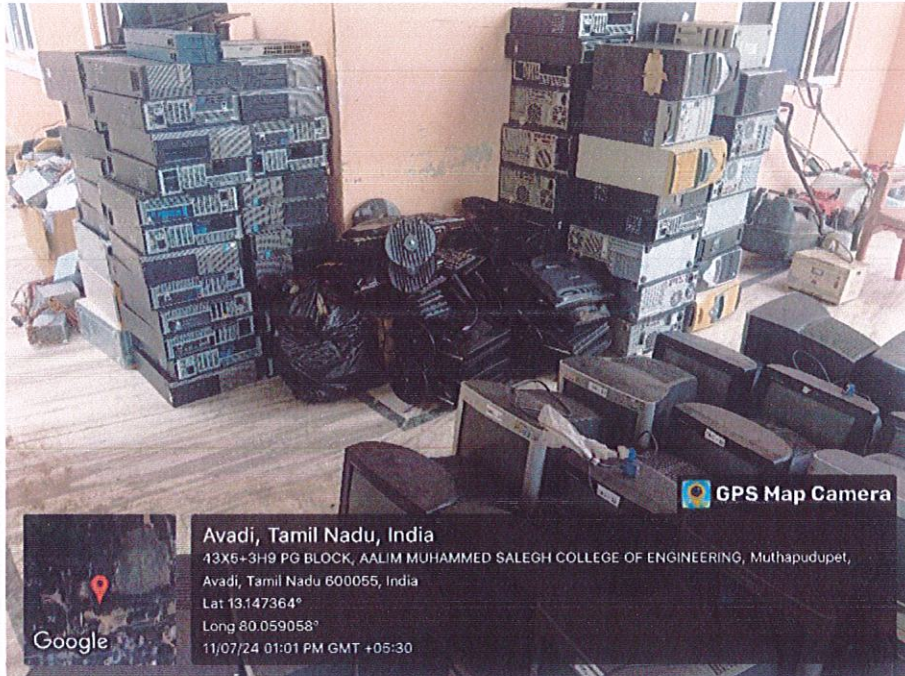


Figure: A Collection of e-Waste

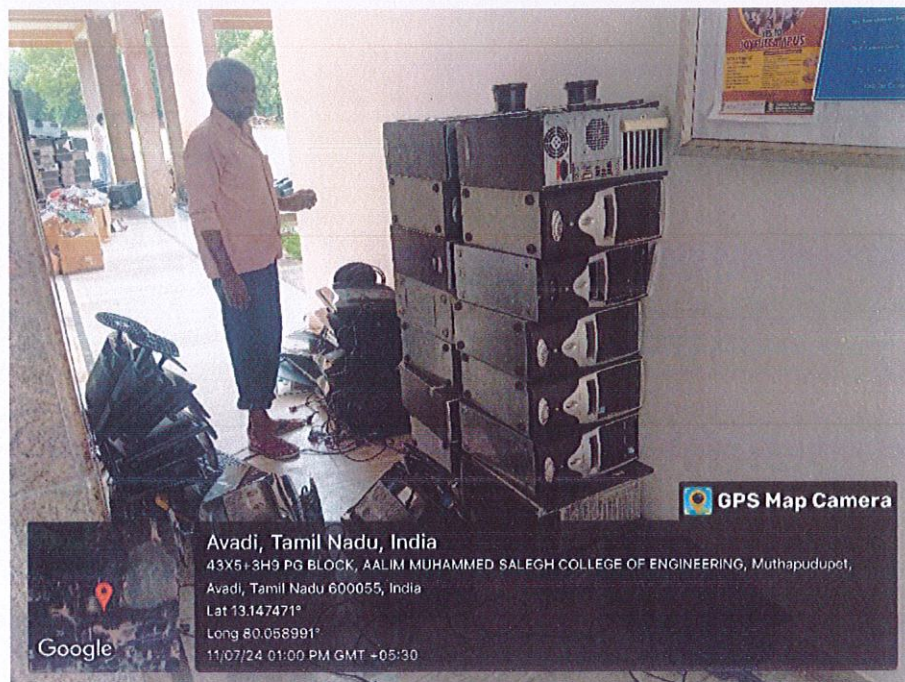


Figure: A Collection of e-Waste



*[Signature]*  
**PRINCIPAL**  
**AALIM MUHAMMED SALEGH**  
**COLLEGE OF ENGINEERING**









# AALIM MUHAMMED SALEGH COLLEGE OF ENGINEERING



Approved by All India Council for Technical Education, New Delhi  
Affiliated to Anna University, Chennai  
NAAC Accredited Institution & NBA Accredited Courses (Mech. Engg., ECE, CSE, IT)  
"Nizara Educational Campus" Muthapudupet, Avadi-IAF, Chennai - 55.

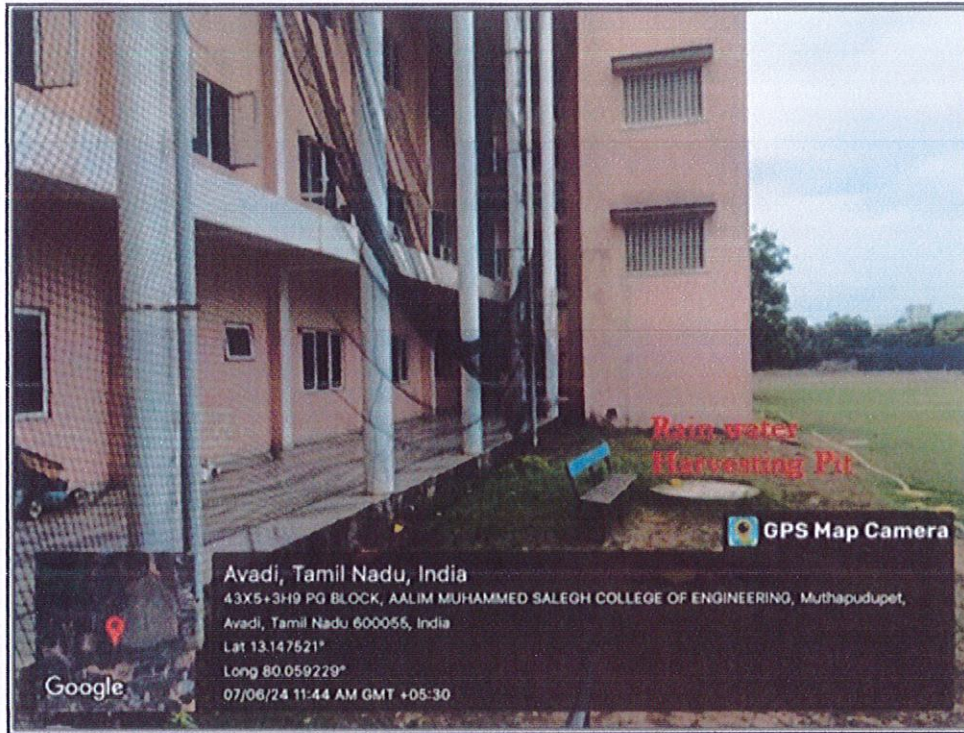



Figure: Rain Water Harvesting Pit



Figure: Rain Water Harvesting Pit



  
PRINCIPAL  
AALIM MUHAMMED SALEGH  
COLLEGE OF ENGINEERING





# AALIM MUHAMMED SALEGH COLLEGE OF ENGINEERING



Approved by All India Council for Technical Education, New Delhi  
Affiliated to Anna University, Chennai

NAAC Accredited Institution & NBA Accredited Courses (Mech. Engg., ECE, CSE, IT)  
"Nizara Educational Campus" Muthapudupet, Avadi-IAF, Chennai - 55.

## Rainwater Harvesting

Rain water harvesting system involves gathering of rainwater that runs from rooftop, garden, road and playground. This is done to preserve the runoff water. This is one of the best solutions to tackle the present water crisis.


### Objectives of rainwater harvesting:

- Recharge the groundwater sources.
- Reduce the loss of water by runoff.

The rain water conservation trenches as shown in the below figure are provided around the campus. This is one of the easiest and most effective means of harvesting rainwater. This conservation trench is about 8 feet high and 5 feet in diameter, and is filled with pebbles about a height of 5 feet. The trench is covered with perforated slabs wherever necessary. The rain water runoff collected in the trench is treated by the pebbles and the water enters into the ground in such a way that the groundwater potential is recharged. This type of ground water recharge improves our ground water potential, makes our garden green and provides a good environment to our students and staff. So our campus has a well-established system to make a sustainable environment.

Weblink: <https://www.aalimec.ac.in/other-facilities/>



  
PRINCIPAL  
AALIM MUHAMMED SALEGH  
COLLEGE OF ENGINEERING





# AALIM MUHAMMED SALEGH COLLEGE OF ENGINEERING



Approved by All India Council for Technical Education, New Delhi  
Affiliated to Anna University, Chennai

NAAC Accredited Institution & NBA Accredited Courses (Mech. Engg., ECE, CSE, IT)  
"Nizara Educational Campus" Muthapudupet, Avadi-IAF, Chennai - 55.

## 5. Disabled-friendly, barrier free environment

- a. DIFFERENTLY ABLED - FRIENDLY WASHROOMS
- b. RAMP AND RAILS ARRANGEMENT
- c. LIFT PROVISIONS
- a. DIFFERENTLY ABLED - FRIENDLY WASHROOMS

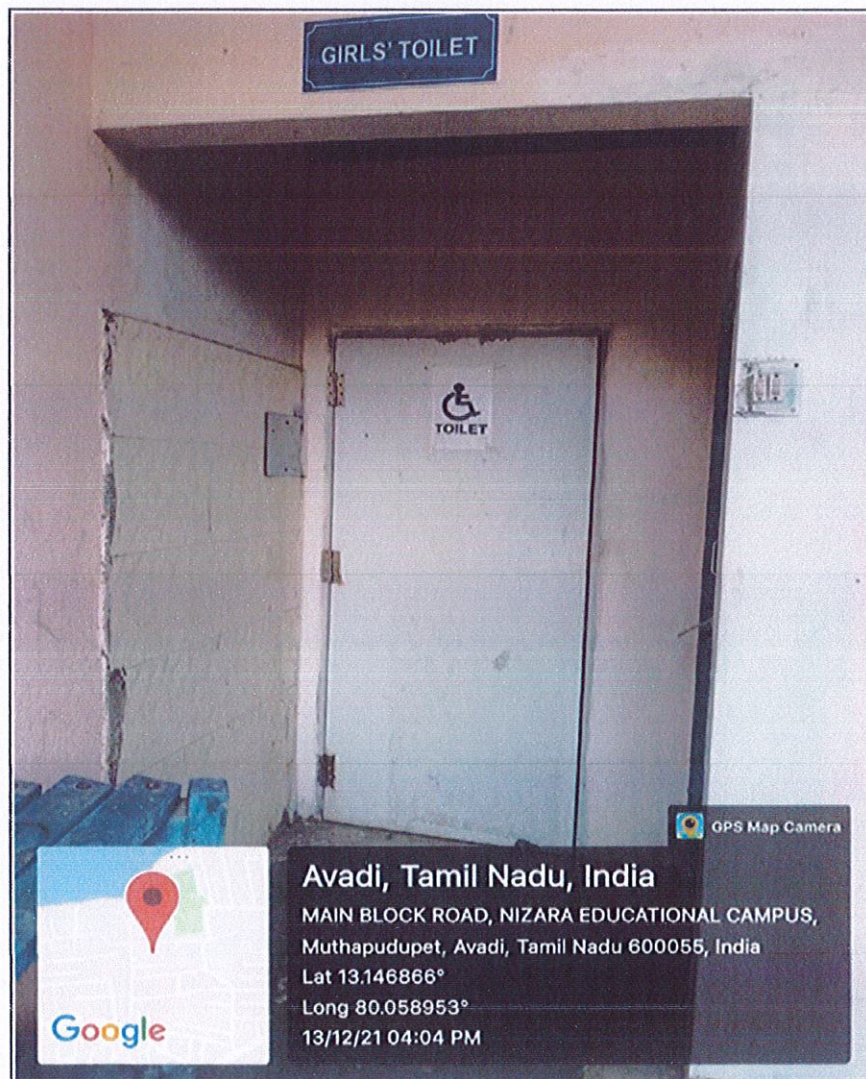


Figure: Differently Abled -Friendly washrooms



*[Signature]*  
PRINCIPAL  
AALIM MUHAMMED SALEGH  
COLLEGE OF ENGINEERING





# AALIM MUHAMMED SALEGH COLLEGE OF ENGINEERING



Approved by All India Council for Technical Education, New Delhi  
Affiliated to Anna University, Chennai

NAAC Accredited Institution & NBA Accredited Courses (Mech. Engg., ECE, CSE, IT)  
"Nizara Educational Campus" Muthapudupet, Avadi-IAF, Chennai - 55.

## b. RAMP AND RAILS ARRANGEMENT



Figure: Ramp and Rails arrangement

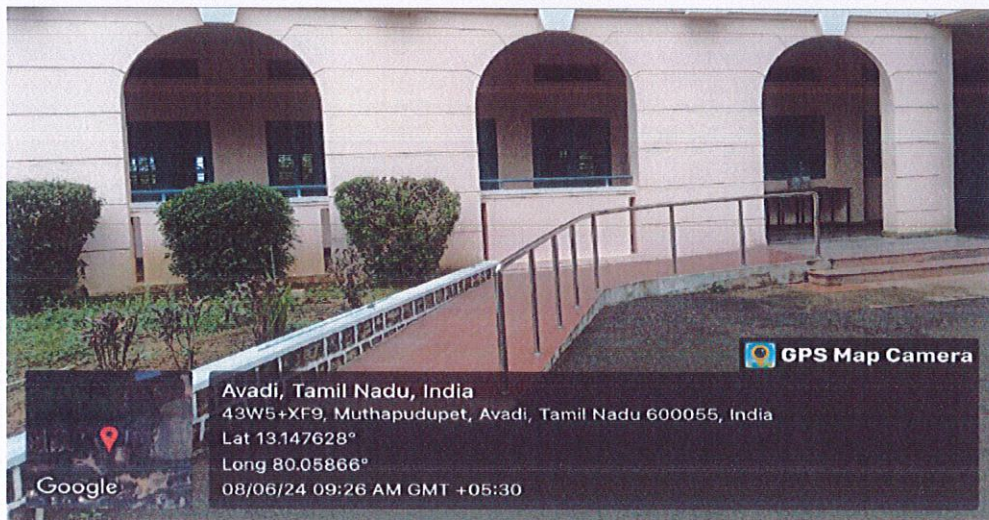


Figure: Ramp and Rails arrangement



*[Signature]*  
**PRINCIPAL**  
**AALIM MUHAMMED SALEGH**  
**COLLEGE OF ENGINEERING**





# AALIM MUHAMMED SALEGH COLLEGE OF ENGINEERING



Approved by All India Council for Technical Education, New Delhi  
Affiliated to Anna University, Chennai

NAAC Accredited Institution & NBA Accredited Courses (Mech. Engg., ECE, CSE, IT)  
"Nizara Educational Campus" Muthapudupet, Avadi-IAF, Chennai - 55.

## c. LIFT PROVISIONS

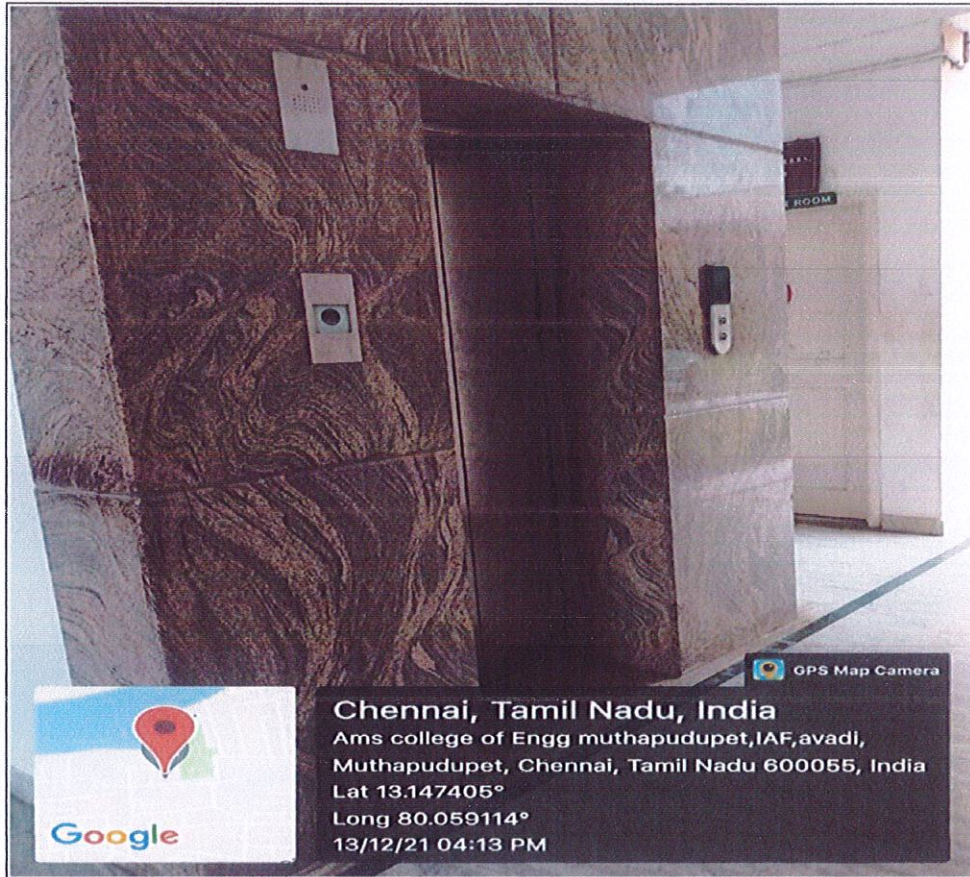


Figure: Lift Facilities



*M. S. / 2/9/2024*  
**PRINCIPAL**  
**AALIM MUHAMMED SALEGH**  
**COLLEGE OF ENGINEERING**